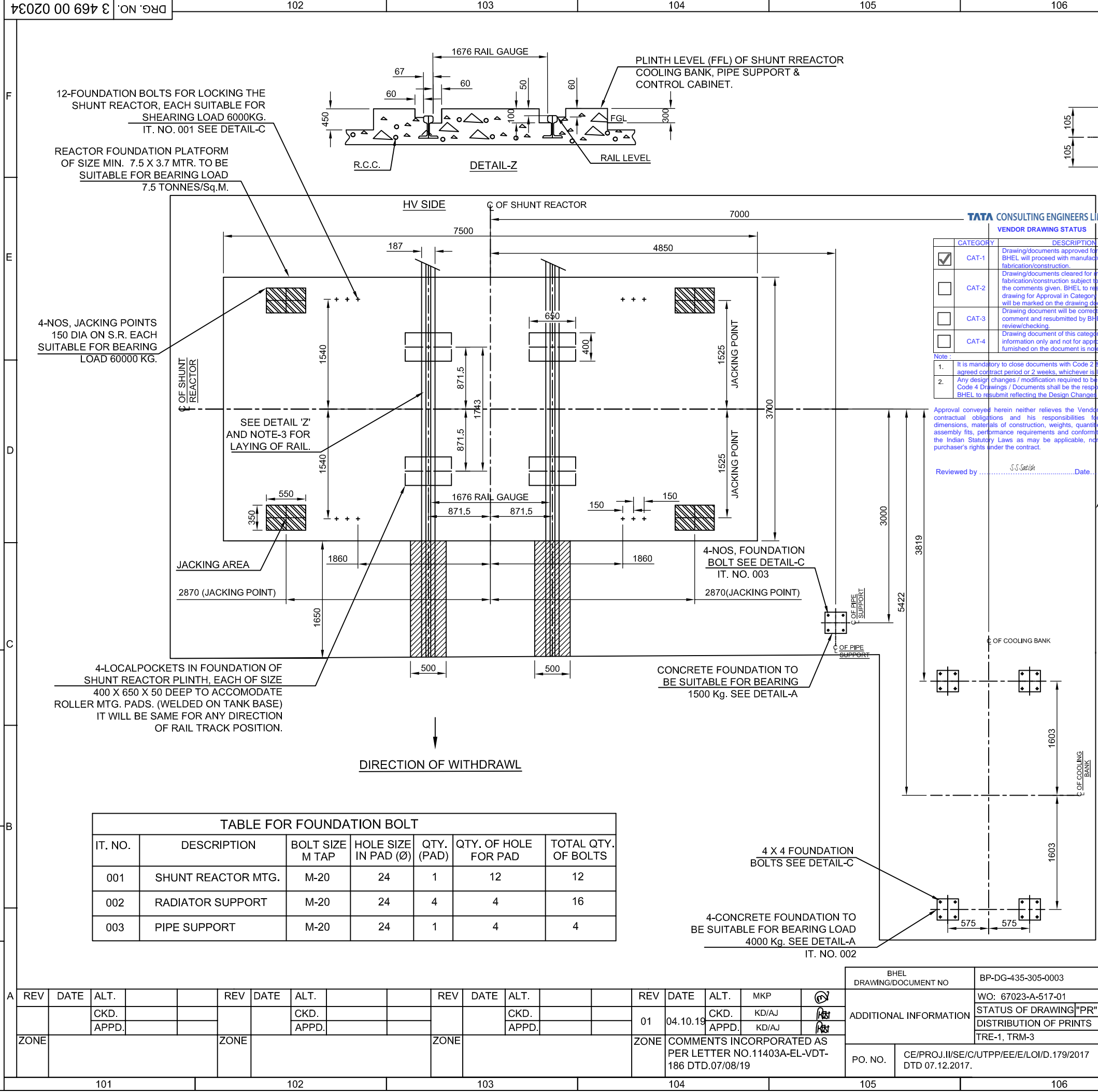


THE INFORMATION ON THIS DOCUMENT IS THE PROPERTY OF BHARAT HEAVY ELECTRICALS LTD. IT MUST NOT BE USED DIRECTLY OR INDIRECTLY IN ANY WAY DETRIMENTAL TO THE INTEREST OF THE COMPANY.

REF.WO.NO. 65002-A-517-01  
REF.DRG.NO. 3 469 00 01758

SIGN/DATE

INVENTORY NO.



| TATA CONSULTING ENGINEERS LIMITED         |                                                                                                                                                                                                                                 |
|-------------------------------------------|---------------------------------------------------------------------------------------------------------------------------------------------------------------------------------------------------------------------------------|
| VENDOR DRAWING STATUS                     |                                                                                                                                                                                                                                 |
| CATEGORY                                  | DESCRIPTION                                                                                                                                                                                                                     |
| <input checked="" type="checkbox"/> CAT-1 | Drawing/documents approved for final distribution. BHEL will proceed with manufacturing/ fabrication/construction.                                                                                                              |
| <input type="checkbox"/> CAT-2            | Drawing/documents cleared for manufacturing/ fabrication/construction subject to incorporating the comments given. BHEL to resubmit the drawing for Approval in Category - 1. Comments will be marked on the drawing documents. |
| <input type="checkbox"/> CAT-3            | Drawing document will be corrected as per comment and resubmitted by BHEL for further review/checking.                                                                                                                          |
| <input type="checkbox"/> CAT-4            | Drawing document of this category are for information only and not for approval. Information furnished on the document is noted.                                                                                                |
| Note :                                    |                                                                                                                                                                                                                                 |
| 1.                                        | It is mandatory to close documents with Code 2 & 3 to Code 1 in agreed contract period or 2 weeks, whichever is lower.                                                                                                          |
| 2.                                        | Any design changes / modification required to be carried out in Code 4 Drawings / Documents shall be the responsibility of BHEL. BHEL to resubmit reflecting the Design Changes for information.                                |

Approval conveyed herein neither relieves the Vendor/Contractor of his contractual obligations and his responsibilities for correctness of dimensions, materials of construction, weights, quantities, design details, assembly fits, performance requirements and conformity of supplies with the Indian Statutory Laws as may be applicable, nor does it limit the purchaser's rights under the contract.

Reviewed by ..... S.S. Sathish ..... Date.....

NOTES:-

- FOUNDATION BOLTS WITH HARDWARES WILL BE SUPPLIED BY BHEL.
- FOR OUTLINE GENERAL ARRGT. REFER DRG. 3 469 00 02032.
- POSSITION OF RAILS HAVE BEEN SHOWN IN BOTH TRANSVERSE AND LONGITUDINAL DIRECTIONS.
- THE DRAWING GIVES THE SIZE AND LOCATING DIMENSIONS OF THE LOAD BEARING PADS PROVIDED WITH REACTOR AND ACCESSORIES. SUITABLE CONCRETE SLAB SIZE TO RECEIVE THESE PADS TO BE DECIDED BY CUSTOMER'S CIVIL ENGINEER.
- POCKETS OF SUITABLE SIZE MAY BE LEFT WHILE CASTING. FOUNDATION FOR EMBEDDING FEMALE PART OF FOUNDATION BOLT (TO BE SUPPLIED BY BHEL) AT THE TIME OF FINAL.
- PLINTH LEVEL :- LEVEL OF TOP OF CONCRETE OF ALL STRUCTURES FOUNDATION.
- DIMENSION OF SOAK PIT WILL BE FINAL AS PER DRAWING NO. TB-400-316-018

|                                                                  |                                       |                                                          |            |                         |            |
|------------------------------------------------------------------|---------------------------------------|----------------------------------------------------------|------------|-------------------------|------------|
| TYPE OF PRODUCT                                                  |                                       | 2 X 125 MVAR, 420KV, 3-PHASE, ONAN SHUNT REACTOR.        |            |                         |            |
| PROJECT                                                          |                                       | 2X660MW TANGEDCO UDANGUDI THERMAL POWER PROJECT STAGE-I. |            |                         |            |
|                                                                  | OWNER                                 | TAMILNADU GENERATION & DISTRIBUTION CORPORATION LTD      |            |                         |            |
|                                                                  | OWNER'S CONSULTANT                    | TATA CONSULTING ENGINEERS LIMITED, BENGALURU             |            |                         |            |
|                                                                  | भारत हेवी इलेक्ट्रिकल्स लिमिटेड भोपाल |                                                          |            | NAME                    | SIGN       |
|                                                                  | BHARAT HEAVY ELECTRICALS LTD. BHOPAL  |                                                          |            | DRN.                    | 07.01.2019 |
|                                                                  | STATUS OF DRAWING "PR"                |                                                          |            | DATE                    | 07.01.2019 |
|                                                                  | DISTRIBUTION OF PRINTS                |                                                          |            | CHD.                    | 07.01.2019 |
|                                                                  | DEPT                                  | CODE                                                     | WEIGHT(kg) | SCALE                   | APPD.      |
|                                                                  | TRE                                   | 406                                                      | -----      | COMP.SCALE-1:1          | 07.01.2019 |
| TITLE:-                                                          |                                       |                                                          |            | DRG. NO. 3 469 00 02034 |            |
| FOUNDATION PLAN                                                  |                                       |                                                          |            | SHEET 01 OF 01          |            |
| PO. NO. CE/PROJ.II/SE/C/UTPP/EE/E/LOI/D.179/2017 DTD 07.12.2017. |                                       |                                                          |            | REV. 01                 |            |

| TABLE FOR FOUNDATION BOLT |                    |                 |                      |            |                      |                     |
|---------------------------|--------------------|-----------------|----------------------|------------|----------------------|---------------------|
| IT. NO.                   | DESCRIPTION        | BOLT SIZE M TAP | HOLE SIZE IN PAD (Ø) | QTY. (PAD) | QTY. OF HOLE FOR PAD | TOTAL QTY. OF BOLTS |
| 001                       | SHUNT REACTOR MTG. | M-20            | 24                   | 1          | 12                   | 12                  |
| 002                       | RADIATOR SUPPORT   | M-20            | 24                   | 4          | 4                    | 16                  |
| 003                       | PIPE SUPPORT       | M-20            | 24                   | 1          | 4                    | 4                   |